



## 中国领先的电气联接解决方案供应商

**服务网络：**以国家新能源科技城江西新余为制造基地，设立有上海、北京、深圳、东莞、南京，长沙等直属的营销和服务中心

**规模技术：**深耕电气联接行业20年，全产业链生产，研发和工程技术人员占比25%

**证书专利：**国家高新技术企业、省级科研中心；ISO9001等三体系合一、UL、CE、CQC等认证。40余项发明专利，80余项实用新型专利

**Service Network:** Take the National New Energy Technology City Jiangxi Xinyu as the manufacturing base, and set up direct marketing and service centers in Shanghai, Beijing, Shenzhen, Dongguan, Nanjing, Changsha, etc.

**Scale technology:** 20 years of deep cultivation in the electrical connection industry, production of the whole industry chain, R&D, engineering and technical personnel accounted for 25%

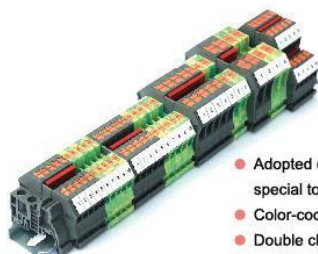
**Certificate patent:** National high-tech enterprise, provincial scientific research center; Certificated ISO9001/14001/45001 systems, UL, CE, CQC and other certifications. More than 40 invention patents, more than 80 utility model patents

为全球客户创造更佳投资回报和客户体验

致力于中国电联接与世界同步

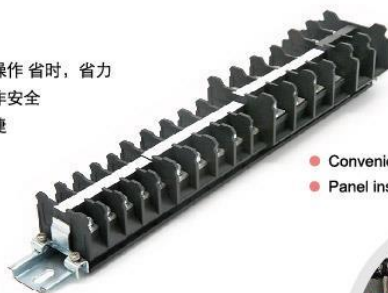


## ■ 端子系列

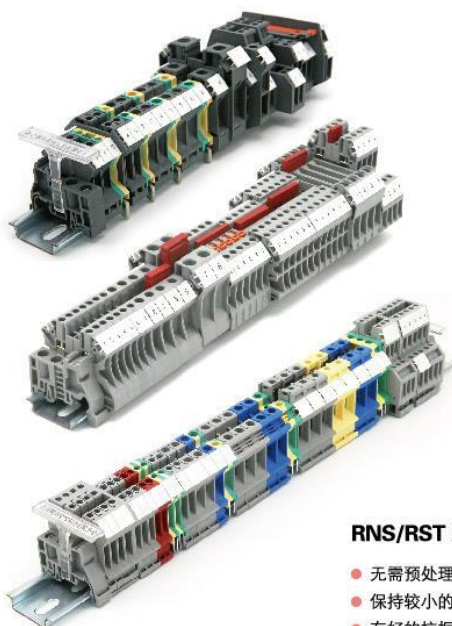


### RPI 直插式接线端子

- 采用直接联接技术,无需专用工具,操作省时,省力
- 带颜色编码的助拔按钮,确保布线操作安全
- 双卡脚设置,无需识别方向,安装快捷
- Adopted direct connection technology, it is without special tools and saving time in installation.
- Color-coded pull button is to ensure safe wiring operation.
- Double clip setting & needless to identify the direction

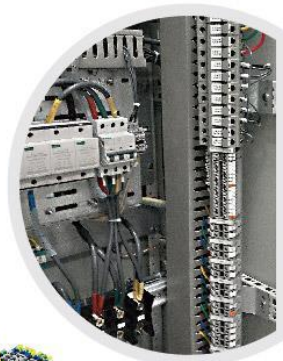


- Convenient and visual wiring
- Panel installation with free combination



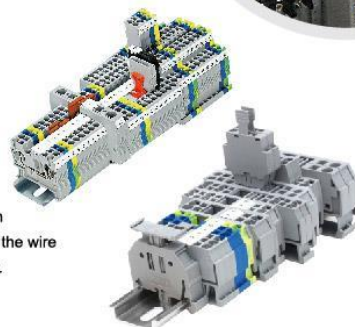
### RUK/RUT/RTB 系列通用螺钉接线端子

- 多导线连接节省时间空间
- 各截面的端子配备统一的附件,节约成本
- 桥接、标识规范方便
- RUT电压等级800V,1000V可选
- 提供RTB经济型可选
- Multi-wire connection saves time and space
- Different sections terminal blocks using unified accessories designed saving cost.
- Bridge and mark are standard and convenient
- Voltage class 800V, 1000V optional
- RTB economical option available



### RNS/RST 系列弹簧端子

- 无需预处理即可连接各种导线,实现快速安装
- 保持较小的开启力和较大的夹持力,不伤线
- 有好的抗振性、气密性和稳定性
- 提供紧凑空间布局的微型弹簧端子
- Wires can be connected without pretreatment to realize quick installation
- Keep small opening force and large clamping force, and do not damage the wire
- The terminal blocks are with good anti-vibration, gas sealing and stability.
- Compacted miniature spring cage terminal blocks are available



### RDT 单极分线盒系列

- 透明外观方便观察是否可靠连接
- 无卤
- 可用跳线串联两个或者多个分线盒
- Transparent appearance, convenient to observe whether the reliable connection
- Halogen free
- Two or more junction boxes can be connected in series with jumpers





在极端环境下也能够实现过程系统稳定性和灵活性



### RUG-O端子式光电耦合器系列

- 我们的产品能完美实现控制单元与传感器和执行器可靠隔离
- 作为过程控制的外围设备，于控制信号和调节装置之间匹配链接的接口元件
- 适用不同电压和功率
- 绝缘电压高，切换频率高，控制端信号损耗小
- RUG-O enable the reliable isolation of control units from sensors and actuators
- As a peripheral of process control and an interface element that matches the link between the control signal and the regulating device
- It is applicable to different voltages and power
- High insulation voltage, high switching frequency, low signal loss at the control end



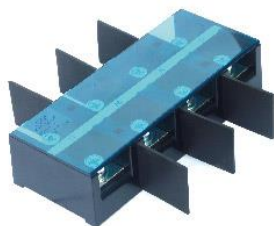
### RP1... 连接片/屏面端子

- 适用于继电保护屏、电力自动化、继电保护系统中
- It is suitable for relay protection panel, power automation in relay protection system



### RBC大电流端子

- 接线方便可视化
- 无须导轨，可自由组合、拆卸方便
- PC材质，耐高温，韧性好
- Convenient wiring and visualization
- Guide rail needless, freely combined, convenient disassembly
- PC material, high temperature resistance, good toughness



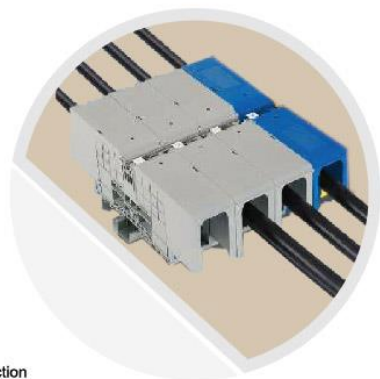
### RTC 系列开放式接线端子

- 结构简单，安装方便
- 配用TO型端头使用，牢固可靠
- 配备防尘盖及PVC白色标记条，可选配防电弧隔片
- Simple structure and convenient installation
- With TO type end, it is firm and reliable
- Equipped with dust-proof cover and PVC white marking strip, anti-arc spacer optional



### RFF 双螺柱端子系列

- 配用TO型端头使用，牢固可靠联接
- 可再选配带有铰链的防护盖，使用过程更安全
- Equipped with TO type end, firm and reliable connection
- Hinged protective cover is optional for safer use



### RBH 穿墙式大电流接线端子系列

- 结构新颖、设计合理、性能可靠
- 高电流，高电压
- IP67防护等级
- 铜铝线兼容
- Novel structure, reasonable design and reliable performance
- High current, high voltage
- IP67 protection level
- Copper-aluminum wire compatible



## ■ 电缆防水接头

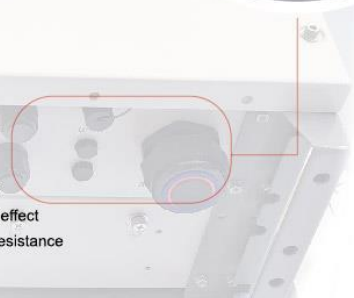
### 尼龙防水接头 Nylon waterproof cable glands

- 螺母双螺旋线，安装顺畅，防错
- 螺帽表面设计为光亮面，便于清洁，减少细菌和污染物的尘积
- 可适用于医疗、食品、机械、光伏、自动化设备等行业
  - Double thread, smooth installation, error - proof
  - The surface of the nut is designed as a bright surface, which is convenient for cleaning and reduces the dust accumulation of bacteria and pollutants
  - Applicable to medical, food, machinery, photovoltaic, automation equipment and other industries



### 金属防水接头 Metal waterproof cable glands

- 紧迫螺母防呆设计，保证拉力，高防护等级
- 自动对中螺纹设计，良好的防震性、气密性
- 屏蔽弹簧螺旋结构，安装方便，屏蔽效果佳
- 全硅胶一体式结构，阻燃硅胶，耐老化
  - Pressing nut fool-proofing, ensure tension, high protection grade
  - Automatic alignment thread design, good shockproof, air tightness
  - Shielding spring helical structure, easy installation, good shielding effect
  - All silica gel integrated structure, flame retardant silica gel, aging resistance



## ■ 防水透气阀

### 尼龙防水透气阀 Nylon waterproof breathable valves

- 全自动生产线，保障产品的一致性和稳定性
- 100%透气度全检，保障客户终端完美体验的品质
- 整体式、超声波焊接，更牢固；
- 每个产品独立序列号，保障售后服务追溯性
  - Fully automatic production line to ensure product consistency and stability
  - 100% air permeability is fully inspected to ensure the quality of the perfect experience of the end customer.
  - Integral, ultrasonic welding, more firm
  - Each product has an independent serial number to ensure the traceability of after-sales service



### 金属防水透气阀 Metal waterproof breathable valve

- 可提供三种材料选择：铜、铝、不锈钢
- 100%透气度全检，保障客户终端完美体验的品质
- 可提供定制化开发
  - Material are available: copper, aluminum, stainless steel
  - 100% air permeability is fully inspected to ensure the quality of the perfect experience of the end customer
  - Customized available

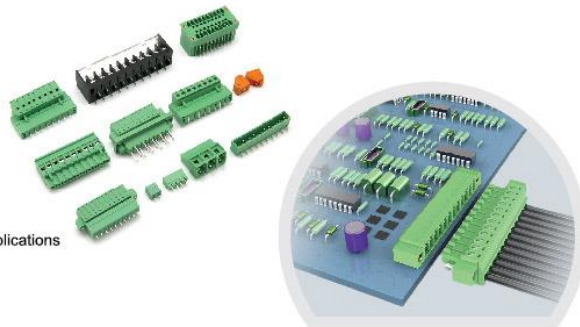






### PCB端子系列 PCB Terminal series

- 螺钉和弹簧等多种连接技术可选，灵活性高
- 多种针距和位数可选，应用范围广
- 提供2到24位螺钉或弹簧等多种连接方式之固定式和插拔式连接器
- 材质卓越，可靠性稳定性高
- 供讯号或电力传导于各式工业应用环境
- With strong flexibility a variety of connection technologies such as screws and springs are optional,
- A variety of stitch lengths and number of positions are available for a wide range of applications
- Provide fixed and plug-in connectors with multiple connection methods such as 2 to 24 positions screws or springs
- Excellent material, high reliability and stability
- For signal or power transmission in various industrial application environments



### 重载连接器系列 Heavy Duty Connector Series

- 用于插芯和模块适配器的多种连接技术，可灵活组合
- 所有金属外壳都采用导电表面且经过密封处理，符合EMC标准
- 具有卓越的防尘、防水、抗震、耐受高机械应力性能
- 全硅胶一体式结构，阻燃硅胶，耐老化
- 广泛应用于机械、风能、能源、轨道交通、电力系统、光电行业、通讯行业
- Multiple connection technologies for contact inserts and module adapters, which can be combined flexibly
- All metal shells have a conductive surface and are sealed to comply with EMC standards
- It has excellent dust-proof, waterproof, shockproof and high mechanical stress resistance performance
- All-silicone integrated structure, flame-retardant silicone, anti-aging
- Widely used in machinery, wind energy, energy, rail transit, power system, optoelectronic industry, communication industry



### 端子台模组系列 Terminal block module series

- 附带快速接口，可快速连接
- 带有状态指示灯，便于维护与调试
- 专用伺服端子台，可简便串联PLC和伺服系统
- 紧凑型继电器模组，达到最佳安装空间
- 创新型安装与释放结构
- Comes with a quick interface for quick connection
- With status indicator light, easy to maintain and debug
- Dedicated servo terminal block, easy to connect PLC and servo system in series
- Compact relay module to achieve the best installation space
- Innovative installation and release structure



### 预绝缘端头系列 Pre-insulated terminal series

- 采用优质铜材,确保导电性能
- 绝缘端头和接头压接稳固导线，成型美观
- 种类齐全，应用广泛，覆盖所有的电联接领域
- Use high-quality copper to ensure electrical conductivity
- Insulated ends and connectors are crimped and firmly connected to the wires, and the shape is beautiful.
- Complete variety, wide application, covering all electrical connection fields

